

Embankment Modeling for the Clive DU PA Model

5 June 2014 ~~30 May 2014~~ ~~26 May 2014~~



Prepared by
NEPTUNE AND COMPANY, INC.
1505 15th St, Suite B, Los Alamos, NM 87544

1. Title: Embankment Modeling for the Clive DU PA Model		
2. Filename: Embankment Modeling V2.docx		
3. Description: This white paper addresses specific details relating to the dimensional components of the Federal DU Cell, located at the Clive facility. This paper includes a description of the parameters and calculations used to estimate the various dimensional components of the Federal DU Cell embankment.		
	Name	Date
4. Originator	Dan Levitt	May 23, 2014
5. Reviewer	Mike Sully	May 26, 2014
6. Remarks		
5/23/2014: DL. Revision to R1 of this white paper is not yet complete. Some references to "Class A South" remain in this document and cannot be updated until model parameters are also updated (during PA maintenance).		

This page is intentionally blank, aside from this statement.

CONTENTS

FIGURES	v
TABLES	vi
1.0 Summary of Parameter Values.....	1
2.0 Introduction	2
3.0 Physical Dimensions	32
3.1 Federal DU Cell Embankment Dimensions	3
3.1.1 Federal DU Cell Embankment Interior Waste.....	54
3.1.2 Federal DU Cell Cover and Liner Dimensions.....	76
4.0 Original Grade Elevation	1140
4.1 Federal DU Cell Embankment Original Grade	1140
5.0 Implementation in the GoldSim Model.....	1244
5.1 Representation of the Federal DU Cell Embankment	1244
5.1.1 Federal DU Cell Embankment Dimensions	1244
5.1.2 Federal DU Cell Columns	1342
6.0 References	1544

FIGURES

Figure 1. The Clive Facility, with the location of the Federal DU Cell embankment outlined in green. This orthophotograph is roughly 1 mile across, and north is up.	<u>43</u>
Figure 2. Section and Plan views of the Federal DU Cell embankment, with top slope shown in blue and side slope in green. The brown dotted line in the West-East Cross section represents below-grade (below the line) and above-grade (above the line) regions of the embankment.	<u>54</u>
Figure 3. Dimensions of the Federal DU Cell embankment that are used in the Clive DU PA model.	<u>65</u>
Figure 4. Federal DU Cell and 11e.(2) cell engineering drawing 14004 V1.	<u>87</u>
Figure 5. Federal DU Cell and 11e.(2) cell engineering drawing 14004 V3 (west-east cross section).	<u>98</u>
Figure 6. Federal DU Cell cell engineering drawing 14004 V7: cap dimensions.	<u>109</u>
Figure 7. Section 32 within the Aragonite quadrangle, as it appeared in 1973, before construction of the Clive Facility. Note elevation contours at 4270 and 4280 ft amsl. <i>ARAGONITE NW</i> is the next quadrangle to the west.	<u>124</u>
Figure 8. Geometrical deconstruction of the Federal DU Cell cell waste volumes	<u>134</u>
Figure 9. Waste layering definitions within the two columns of the Federal DU Cell cell	<u>144</u>

TABLES

Table 1. Summary of embankment engineering parameters	1
Table 2. Cover layer thicknesses for the Federal DU Cell cell	11 10

1.0 Summary of Parameter Values

The parameters that define the characteristics of the [portion of Federal Cell Hhousing DU \(the Federal DU Cell\) Class A South](#) embankment at the Clive facility are summarized in [Table 1](#). Following this summary are sections describing the basis for these values. Of principal interest to the model are the interior dimensions of the volume occupied by waste, and the thicknesses of the various layers in the engineered cover.

Table 1. Summary of embankment engineering parameters

parameter	value	units	reference / comment
average original grade elevation	4272	ft amsl*	USGS (1973) see § 4.14.1 below
elevation of top of the waste at the ridgeline	4317.25	ft amsl	EnergySolutions (20092014) see eq. (1)(1) in § Error! Reference source not found.3.1.4
elevation of top of the waste at the break in slope	4299.20	ft amsl	EnergySolutions (20092014) see eq. (2)(2) in § Error! Reference source not found.3.1.4
average elevation of the bottom of the waste	4264.17	ft amsl	EnergySolutions (20092014) see eq. (3)(3) in § Error! Reference source not found.3.1.4
average elevation of the bottom of the clay liner	4262.17	ft amsl	see eq. (6)(3) in § 3.1.23.1.2
length overall	1429.6	ft	EnergySolutions (20092014) see eq. (4)(4) in § Error! Reference source not found.3.1.4
width overall	1775.0	ft	EnergySolutions (20092014) see eq. (5)(5) in § Error! Reference source not found.3.1.4
length from edge to the break in slope	153.2	ft	EnergySolutions (20092014) see § Error! Reference source not found.3.1.4

width from edge to the break in slope	152.1	ft	EnergySolutions (2009) see § Error! Reference source not found.3.1.1 <i>ibid.</i>
length along the ridge	542.1	ft	<i>ibid.</i>
<u>ET Cover Layer Thicknesses</u>			
surface	0.5	ft	EnergySolutions (2014) Federal Cell Drawing 14004 V7
evaporative zone	1.0	ft	<i>ibid.</i>
frost protection	1.5	ft	<i>ibid.</i>
upper radon barrier	1.0	ft	<i>ibid.</i>
lower radon barrier	1.0	ft	<i>ibid.</i>

* above mean sea level

2.0 Introduction

The safe storage and disposal of depleted uranium (DU) waste is essential for mitigating releases of radioactive materials and reducing exposures to humans and the environment. Currently, a radioactive waste facility located in Clive, Utah (the “Clive facility”) operated by the company EnergySolutions Inc. is being considered to receive and store DU waste that has been declared surplus from radiological facilities across the nation. The Clive facility has been tasked with disposing of the DU waste in a manner that protects humans and the environment from future radiological releases.

To assess whether the proposed Clive facility location and containment technologies are suitable for protection of human health, specific performance objectives for land disposal of radioactive waste set forth in Utah Administrative Code (UAC) Rule R313-25 *License Requirements for Land Disposal of Radioactive Waste - General Provisions* must be met—specifically R313-25-8 *Technical Analyses*. In order to support the required radiological performance assessment (PA), a probabilistic computer model has been developed to evaluate the doses to human receptors and concentrations in groundwater that would result from the disposal of radioactive waste, and conversely to determine how much waste can be safely disposed at the Clive facility. The GoldSim systems analysis software (GTG, 2010) was used to construct the probabilistic PA model.

The site conditions, chemical and radiological characteristics of the wastes, contaminant transport pathways, and potential human receptors and exposure routes at the Clive facility that are used to structure the quantitative PA model are described in the conceptual site model documented in the white paper entitled *Conceptual Site Model for Disposal of Depleted Uranium at the Clive Facility* (Clive DU PA CSM.pdf).

The purpose of this white paper is to address specific details relating to the dimensional components of the [Class A South \(CAS\)DU](#) section of the Federal Cell, located at the Clive

facility. This paper is organized to give a brief overview of where the [Federal DU Cell](#) section is located at the Clive facility followed by a description of the parameters and calculations used to estimate the various dimensional components of the [CAS-Federal DU Cell](#) embankment.

This probabilistic PA takes into account uncertainty in many input parameters, but the dimensions of the [Federal DU Cell](#)[CAS](#) embankment are not considered to be uncertain. Given that the disposal cell is carefully designed and constructed, any uncertainty in its dimensions is considered insignificant. Stochastic representation of parameters is reserved for those values about which there is uncertainty.

3.0 Physical Dimensions

The Clive DU PA model considers only a single embankment. For the purposes of this PA, only the [Federal DU Cell](#)[CAS](#) ~~section-portion~~ of the Federal Cell is considered for disposal ([Figure 1](#)~~Figure 1~~).

3.1 [Federal DU Cell](#)[CAS](#) Class A South Embankment Dimensions

The [Federal DU Cell](#)[CAS](#) embankment, or cell, is the western fraction of the Federal Cell ([Figure 1](#)~~Figure 1~~). The eastern section is occupied by the 11e.(2) cell, which is dedicated to the disposal of uranium processing by-product waste, but not considered in this analysis. A stylized drawing of the [Federal DU Cell](#)[CAS](#) and its relationship to the 11e.(2) cell is shown in [Figure 2](#)~~Figure 2~~.

The general aspect of the [Federal DU Cell](#)[CAS](#) embankment is that of a hipped cap, with relatively steeper sloping sides nearer the edges. The upper part of the embankment, known as the top slope, has a moderate slope, while the side slope is markedly steeper (20% as opposed to 2.4%). These two distinct areas, shown in different colors in [Figure 2](#)~~Figure 2~~, are modeled separately in the Clive DU PA model. Each is modeled as a separate one-dimensional column, with an area equivalent to the embankment footprint. The embankment is also constructed such that a portion of it lies below-grade ([Figure 2](#)~~Figure 2~~).



Figure 1. The Clive Facility, with the location of the [Federal DU Cell Class A South](#) embankment outlined in green. This orthophotograph is roughly 1 mile across, and north is up.

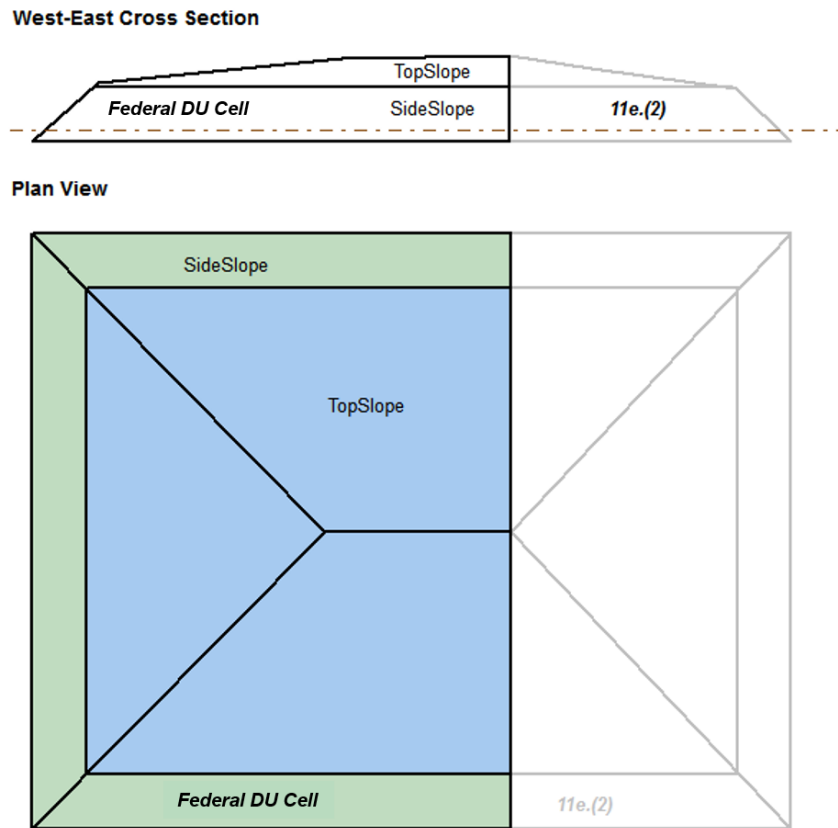


Figure 2. Section and Plan views of the Federal DU Cell Class A South embankment, with top slope shown in blue and side slope in green. The brown dotted line in the West-East Cross section represents below-grade (below the line) and above-grade (above the line) regions of the embankment.

3.1.1 Federal DU Cell Embankment Interior Waste

The Clive DU PA model requires information about embankment dimensions to be able to determine the footprint areas and the volumes of waste within each area. From this, an average thickness of the waste is determined, since the 1-D column has but one thickness over its entire area. All dimensions provided in this white paper are with respect to the waste itself, and do not include the liner or cover materials. The dimensions of interest that are used in the Clive DU PA model are shown in [Figure 3](#)~~Figure 3~~. The values of the dimensions shown in [Figure 3](#)~~Figure 3~~ are derived from various engineering drawings in *EnergySolutions* (20092014) which are herein referred to in this white paper as drawings 07021 V1, 07021 V3, and 07021 V7. These drawings are all reproduced from *EnergySolutions* (20092014) in Figures 4 through [Figure 6](#)~~Figure 6~~.

As shown in the engineering drawings, the exact dimensions of the Federal DU Cell~~CAS~~ are somewhat irregular, with a gently sloping bottom and ridge line. The shape of the cell has been somewhat idealized to facilitate calculations, and it is assumed to have a horizontal floor and ridge line. Elevations for the top of the waste are derived from drawing [07021-14004 V1](#) ([Figure 4](#)~~Figure 4~~), which has the note “1. All elevations shown are for top of waste...”. Elevation of the

bottom of waste is derived from drawing [07021-14004 V3](#) ([Figure 5](#)[Figure-5](#)). Details on each of these values are provided below.

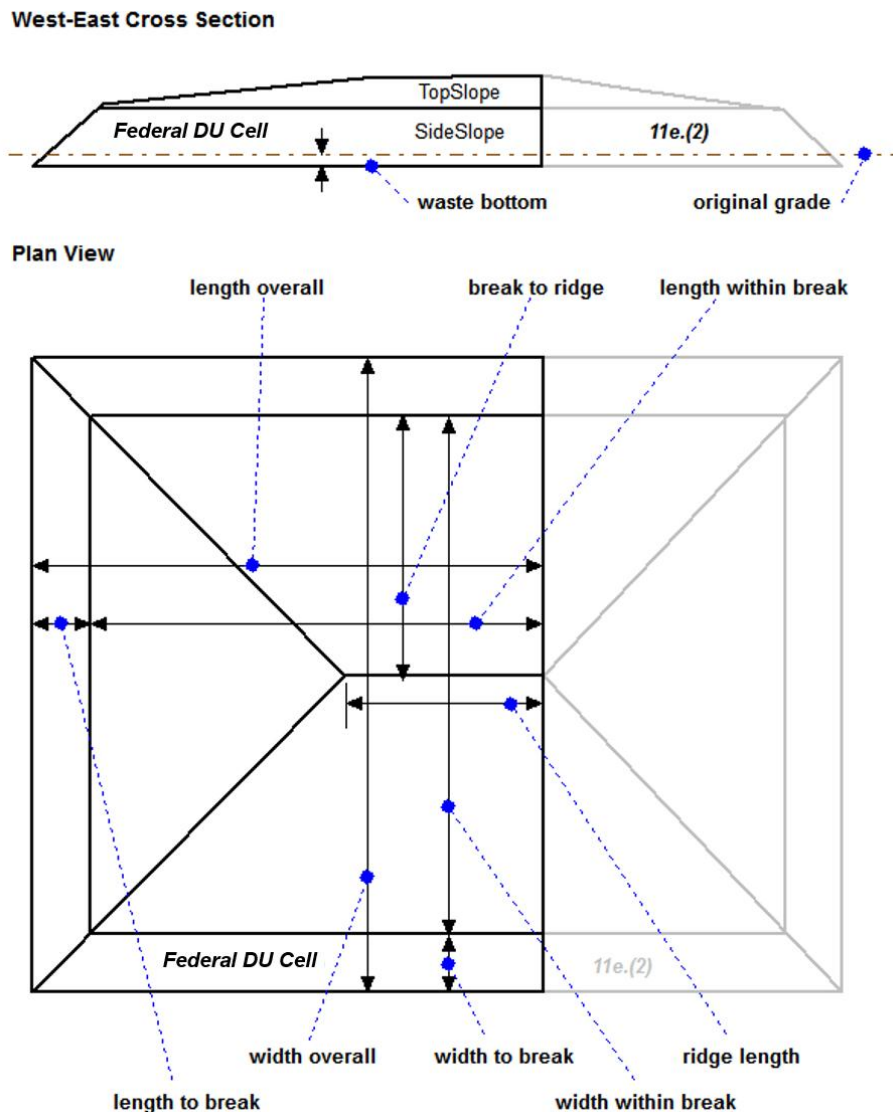


Figure 3. Dimensions of the [Federal DU Cell Class A South](#) embankment that are used in the Clive DU PA model.

Elevation of the top of the waste at the ridge line: This is calculated as an average of the values from drawing [07021-14004 V3](#) ([Figure 5](#)[Figure-5](#)), West-East Cross Section A, accounting for the 2-ft thick radon barrier. The thickness of the radon barrier, 24 in. (2 ft) is shown in the [Federal DU Cell CAS](#) top slope and [Federal DU Cell CAS](#) side slope sections of drawing [07021-14004 V7](#) ([Figure 6](#)[Figure-6](#)). The top of the radon barrier at the west peak is at 4318.80 ft, so the top of the waste is 2 ft lower at an elevation of 4316.80 ft. Likewise, the top of the radon barrier at the east peak is 4319.70 ft, so the top of the waste is 2 ft lower at an elevation of

4317.70 ft, after adjusting for the thickness of the radon barrier. The average of the west and east peak elevations is:

$$(4316.80 \text{ ft} + 4317.70 \text{ ft}) / 2 = 4317.25 \text{ ft} \quad (1)$$

Elevation of the top of the waste at the slope break: The elevation of the top of the radon barrier derived from the upper drawing [07021-14004 V3](#) ([Figure 5](#)), West-East Cross Section A, is 4301.20 ft. Subtracting the 2-ft thick radon barrier as described above shows the elevation of the top of the waste to be:

$$4301.20 \text{ ft} - 2 \text{ ft} = 4299.20 \text{ ft} \quad (2)$$

Elevation of the bottom of the waste: This is calculated as the average of the values derived from the lower drawing [07021-14004 V3](#) ([Figure 5](#)), West-East Cross Section A. The top of the clay liner is at an elevation of 4262.14 ft at the west end, and 4266.19 ft at the east end, which includes the area under the 11e.(2) section of the Federal Cell. The average of these elevations is:

$$(4262.14 \text{ ft} + 4266.19 \text{ ft}) / 2 = 4264.17 \text{ ft} \quad (3)$$

Length (east-west) overall: The overall length of the [Federal DU CellCAS](#) is the sum of the values derived from drawing [07021-14004 V1](#) ([Figure 4](#)). Following along the dimensions shown just below the centerline running west-east, the length is:

$$153.2 \text{ ft} + 734.3 \text{ ft} + 542.1 \text{ ft} = 1429.6 \text{ ft} \quad (4)$$

Width (north-south) overall: The overall width of the [Federal DU CellCAS](#) is the sum of values from drawing [07021-14004 V1](#) ([Figure 4](#)). Following along the dimensions shown down the centerline running north-south, the width is:

$$152.1 \text{ ft} + 735.4 \text{ ft} + 735.4 \text{ ft} + 152.1 \text{ ft} = 1775.0 \text{ ft} \quad (5)$$

Length from edge to break in slope: This is derived from drawing [1400407021 V1](#) ([Figure 4](#)) at the western slope which is 153.2 ft.

Width from edge to break in slope: This is derived from drawing [07021 V1](#) ([Figure 4](#)) at the north or south slope which is 152.1 ft.

Length along the ridge: The length along the ridge is derived from drawing [1400407021 V1](#) ([Figure 4](#)) which is 542.1 ft.

3.1.2 [Federal DU CellClass A South Cover and Liner Dimensions](#)

The engineered cover designs for the top slope and side slope sections of the [Federal DU CellCAS](#) are shown in drawing [1400407021 V7](#) ([Figure 6](#)). The values chosen from the sections labeled “[Class A SouthET Cover Top Slopes](#)” and “[Class A SouthET Cover Side Slopes](#)” are summarized in [Table 2](#). The properties of the various layers within the engineered cover and liner are discussed in detail in *Unsaturated Zone Modeling* white paper.

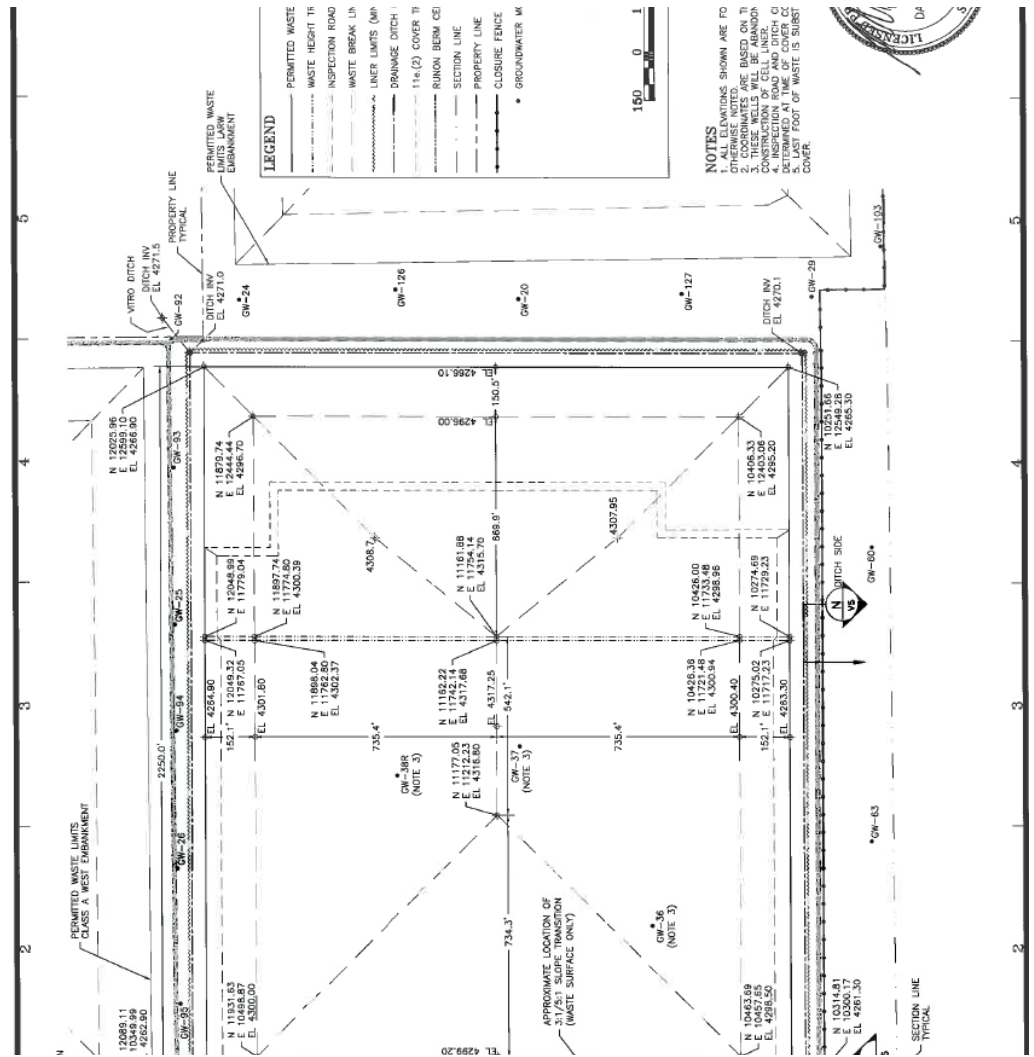


Figure 4. Federal DU Cell Class A South and 11e(2) cell engineering drawing 07021-14004 V1.

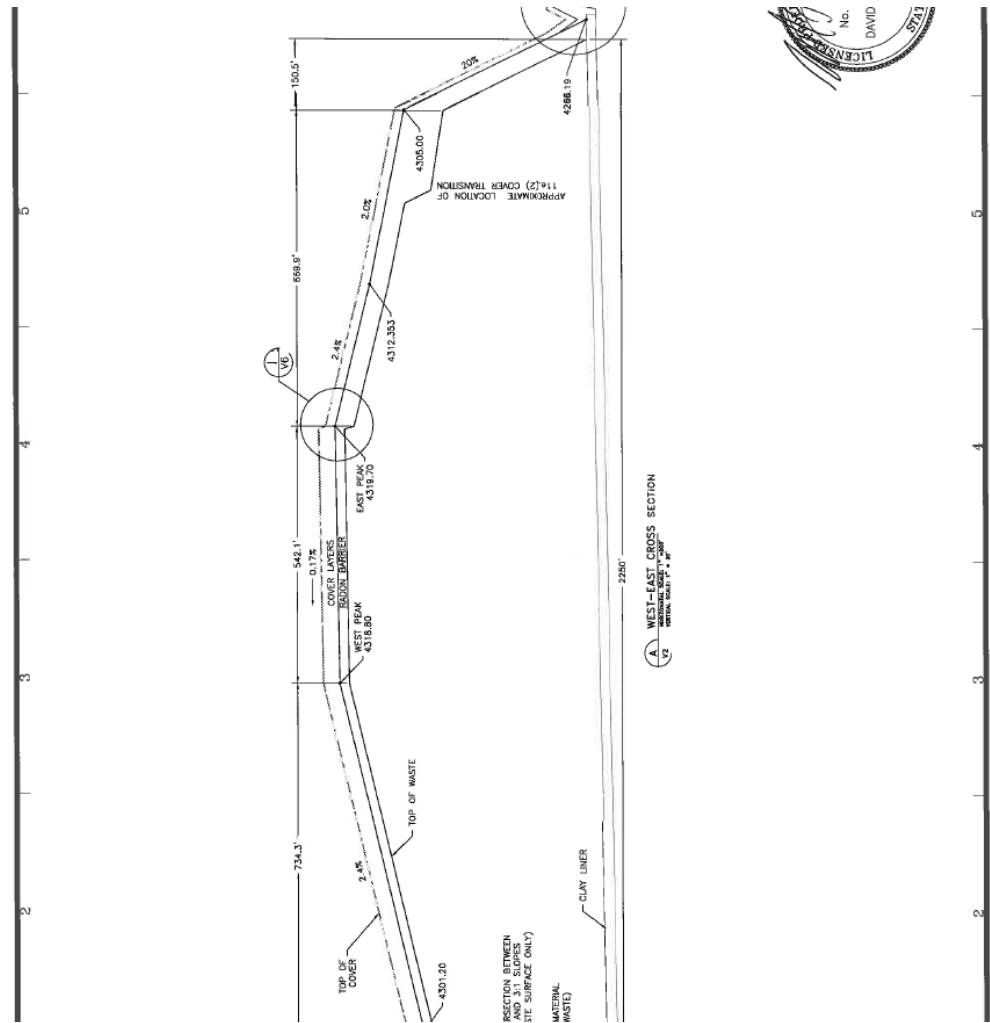


Figure 5. Federal DU Cell Class A South and 11e.(2) cell engineering drawing 07021-14004 V3 (west-east cross section).

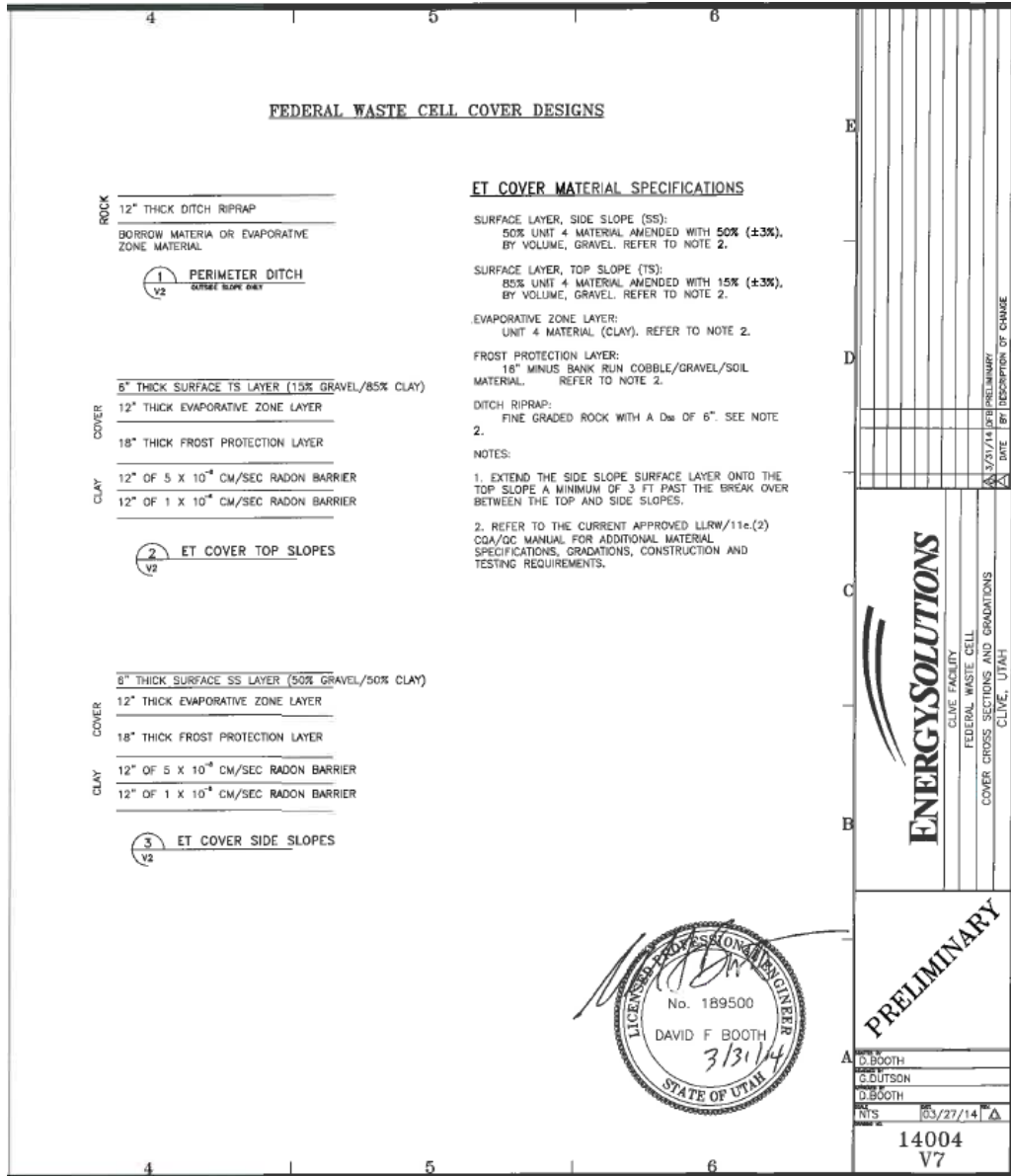


Figure 6. Federal DU Cell Class A South cell engineering drawing 07021-14004 V7: cap dimensions.

Table 2. Cover layer thicknesses for the [Federal DU CellCAS](#) cell

layer	thickness (ft)	
	top slope	side slope
surface	0.5	0.5
evaporative zone	1.0	1.0
frost protection	1.5	1.5
upper radon barrier	1.0	1.0
lower radon barrier	1.0	1.0

The waste layers of the embankment are underlain by a clay liner, as shown in [Figure 5](#), but no thickness is provided in this engineering drawing set. The thickness of the clay liner is defined in a previous modeling report as 24 in (2 ft) (Table 7 in Whetstone, 2000).

Elevation of the bottom of the clay liner: This is calculated simply as the average elevation of the bottom of the waste in eq. (3) minus the thickness of the liner. The elevation of the bottom of the clay liner is then is:

$$4264.17 \text{ ft} - 2 \text{ ft} = 4262.17 \text{ ft} \quad (6)$$

Note that this is also the elevation of the top of the unsaturated zone.

4.0 Original Grade Elevation

The original grade is of interest in determining the vertical location of wastes inside the embankment. One might consider any above-ground waste or other material to be erodible, and conversely below-ground portions to be inherently not erodible. It is therefore of interest to determine the disposal volume that lies below grade since placing waste below grade greatly reduces the potential for erosion during lake cycles. Again, only the [Federal DU CellCAS](#) is considered at this time.

4.1 [Federal DU CellClass A South](#) Embankment Original Grade

The elevation of the original grade is interpreted from the elevations indicated on a 1:24,000 scale quadrangle map for Aragonite, UT (USGS, 1973). The relevant section of this map as it applies to the [Federal DU CellCAS](#) embankment is shown in [Figure 7](#). This 1-square mile section, Section 32, is the site of the Clive Facility ([Figure 7](#)). The southwest corner of Section 32 is at elevation 4270 ft amsl (above mean sea level) while the ground surface (original grade) slopes gently and fairly uniformly up to the northeastern corner, crossing the 4280-ft amsl contour.

The [Federal DU CellCAS](#) occupies the southwestern corner of Section 32 (refer to [Figure 1](#)), and its center is approximately at an elevation of 4272 ft amsl. This is the value used for original grade of the [Federal DU CellCAS](#).

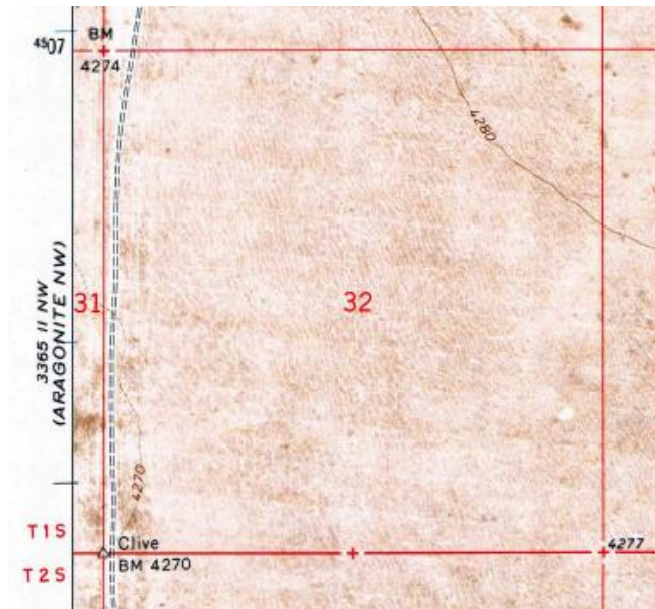


Figure 7. Section 32 within the Aragonite quadrangle, as it appeared in 1973, before construction of the Clive Facility. Note elevation contours at 4270 and 4280 ft amsl. ARAGONITE NW is the next quadrangle to the west.

5.0 Implementation in the GoldSim Model

5.1 Representation of the [Federal DU Cell](#)CAS Embankment

The representation of the [Federal DU Cell](#)CAS embankment in the Clive DU PA Model is essentially one-dimensional (1-D), and is therefore necessarily simplified. The top slope and side slope sections of the embankment are modeled as independent 1-D columns, as discussed below. The volumes of waste and each layer of engineered cap and liner are preserved. Since the cap and liner are laterally continuous and do not vary in dimension within a column, the thicknesses in the model correspond directly to thicknesses in the real world. The waste layers, however, are of a shape that changes in the horizontal, and must be rearranged to produce a shape that is a rectangular prism of equal volume to the actual waste volume.

5.1.1 [Federal DU Cell](#)CAS Embankment Dimensions

The dimensions developed in Section [Error! Reference source not found.3-1-1](#) are documented in the model in the container \Disposal\ClassASouthCell\ClassASouth_Cell_Dimensions. The calculation of the waste volumes within the side slope and within the top slope, as identified in [Figure 2](#)[Figure-2](#), is done within the GoldSim model by assembling pieces that have volumes that are easily calculated using basic geometry, as shown in [Figure 8](#)[Figure-8](#). Once the waste volumes for top and side slope are known, the average waste thicknesses are calculated. These

are used as the waste thicknesses in the columns within the GoldSim model, as described in the following section.

Volume Calculations

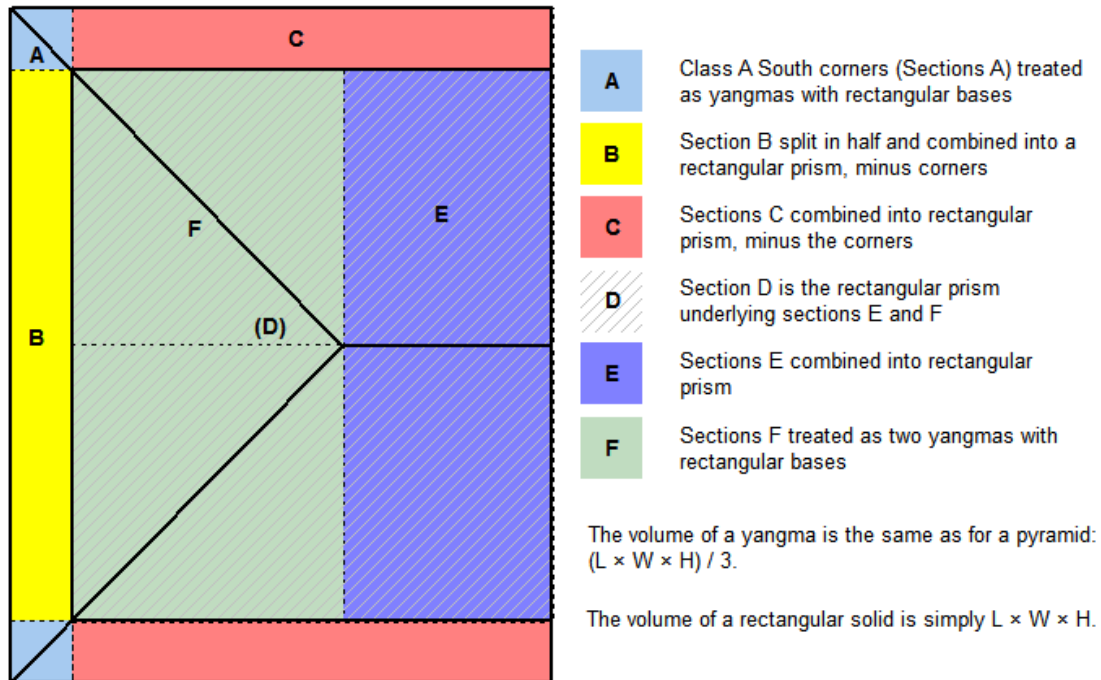


Figure 8. Geometrical deconstruction of the [Federal DU Cell CAS](#) cell waste volumes

5.1.2 [Federal DU Cell CAS](#) Columns

The top slope and side slope columns are modeled in parallel, since they have different waste and cap layer thicknesses. That is, each column has primarily-only vertical flow of water, ~~with some lateral flows in the cover.~~ Both feed ~~The vertical flow feeds~~ into the unsaturated zone and thence to groundwater at the bottom. The top slope column has a much thicker waste layer than the side slope, and this is reflected in the overall thickness of the two columns. In order to capture the flexibility available in locating waste during disposal operations, the user can select which waste types go where in the top slope column, using the Waste Layering Definition dashboard. No DU wastes are to be disposed in the side slope column in this model. An example of this selection is shown in [Figure 9](#).

Definition of Waste Layering for the Class A South Embankment

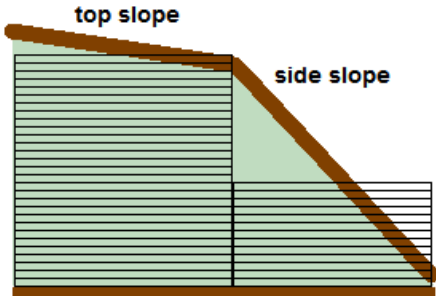
The embankment consists of top slope and side slope sections, each of which is represented by a column of cells with a total thickness equal to the average thickness of the respective column. Each column is broken down into cells of like thickness (within the column), roughly 0.5 m. Each cell may

Top Slope column

Top Slope Waste Cell Contents	
Waste01	no waste (clean soil)
Waste02	no waste (clean soil)
Waste03	no waste (clean soil)
Waste04	no waste (clean soil)
Waste05	no waste (clean soil)
Waste06	no waste (clean soil)
Waste07	DUOx: GDP (contaminated)
Waste08	DUOx: GDP (contaminated)
Waste09	DUOx: GDP (contaminated)
Waste10	DUOx: GDP (contaminated)
Waste11	DUOx: GDP (contaminated)
Waste12	DUO3: SRS (contaminated)
Waste13	DUOx: GDP (clean uranium)
Waste14	DUOx: GDP (clean uranium)
Waste15	DUOx: GDP (clean uranium)
Waste16	DUOx: GDP (clean uranium)
Waste17	DUOx: GDP (clean uranium)
Waste18	DUOx: GDP (clean uranium)
Waste19	DUOx: GDP (clean uranium)
Waste20	DUOx: GDP (clean uranium)
Waste21	DUOx: GDP (clean uranium)
Waste22	DUOx: GDP (clean uranium)
Waste23	DUOx: GDP (clean uranium)
Waste24	DUOx: GDP (clean uranium)
Waste25	DUOx: GDP (clean uranium)
Waste26	DUOx: GDP (clean uranium)
WasteOut	DUOx: GDP (clean uranium)

	thickness	volume
each waste cell	0.504 m	8.79e4 m3
entire waste layer	13.61 m	2.373e6 m3

[Exit to Top Slope Wastes](#)



Side Slope column (currently disabled)

No DU wastes are allowed in the side slope in this model.

	thickness	volume
each waste cell	0.483 m	2.961e4 m3
entire waste layer	5.792 m	3.553e5 m3

[Exit to Side Slope Wastes](#)

Summary information

	Top slope volume	Side slope volume	CAS total volume	bare waste volume	packing efficiency (should be <= 1)
no waste	5.274e5 m3	3.553e5 m3	8.827e5 m3		
Class A Low-Level Waste	0 m3	0 m3	0 m3		
DUO3: SRS (contaminated)	8.79e4 m3	0 m3	8.79e4 m3	2182 m3	0.0248
DUOx: GDP (contaminated)	4.395e5 m3	0 m3	4.395e5 m3	8.833e4 m3	0.201
DUOx: GDP (clean uranium)	1.318e6 m3	0 m3	1.318e6 m3	2.559e5 m3	0.194

A red X indicates that an inventory volume problem requires resolution.

[Go to Material Properties](#)
[CAS Inventory Definitions](#)
[Exit to Class A South](#)
[Control Panel](#)

Figure 9. Waste layering definitions within the two columns of the [Federal DU CellCAS](#) cell

6.0 References

EnergySolutions, 2009. *EnergySolutions License Amendment Request: Class A South/11e.(2) Embankment, Revision 1*, 9 June 2009 (file: Class A South-11e.(2) Eng Drawings.pdf).

EnergySolutions, 2014. Engineering Drawings (file: Federal Cell drawing 14004.pdf).

GTG (GoldSim Technology Group), 2010. *GoldSim: Monte Carlo Simulation Software for Decision and Risk Analysis*, <http://www.goldsim.com>

USGS (United States Geological Survey), 1973. 1:24,000 topographic quadrangle map for Aragonite, UT, revised 1973 (file: UT_Aragonite_1973_geo.pdf).

Whetstone (Whetstone Associates, Inc.), 2000. Revised Envirocare of Utah Western LARW Cell Infiltration and Transport Modeling (file: 2000, July 19 - Whetstone, Western LARW Cell Infiltration Modeling.pdf).